



## Westbury Area Board

Hello and welcome to this Community Policing Team report.

The month of March saw the start of a multi-agency operation to tackle illegal fishing. Many different aspects of Rural Crime involving livestock, fishing or other animals is quite often seasonal, and the 15<sup>th</sup> March marked the start of the closed coarse season for fishing for the UK which runs until 15<sup>th</sup> June 2017. Under the banner of Operation Clampdown, water bailiffs and volunteer bailiffs will be trying to target specific locations and liaising with local fishermen at these places to establish where illegal fishing is taking place and whether or not any criminal offences are occurring. They will be linking in with the Environment Agency, Angling Trust, Rural Crime Team and with the Community Police Team to develop intelligence relating to offences and possible suspects.

For more information on this please see the Angling Trust website:

<http://www.anglingtrust.net/news.asp?itemid=3673&itemTitle=Operation+CLAMPDOWN+5+now+running+across+England+to+target+illegal+close+season+fishing&section=29&sectionTitle=Angling+Trust+News>

There have been a number of high profile incidents across the West Wiltshire Community Policing area over the last month, including the murder investigation in Trowbridge. This was a very challenging time for our resources not only in that location but also across the wider Force area who were called upon for assistance, and during that time the true nature of our policing capability and the support and engagement from the public has shone through. The dedication and empathy from all involved, together with the help and assistance from the public has been something to be proud of, albeit it has come as a result of a devastating incident. Our thoughts still remain firmly with the family and friends of those whose lives were affected by it.

Further afield we have witnessed traumatic scenes in Westminster which no doubt has impacted on people all over the United Kingdom. Wiltshire Police Chief Constable Mike Veale made the following statement in relation to the attack:

“I, like many others, have watched the horrors unfolding over the last number of hours in our capital city and my heart sank as I began to realise the tragic consequences of this terrible attack on so many innocent people. I am profoundly saddened to hear about the sad and terrible loss of one of our police family who has been killed as a result of this mindless violence.

“My deepest and most heartfelt sympathies go out to all those affected by this terrible

[feedback@wiltshire.police.uk](mailto:feedback@wiltshire.police.uk)

incident. My officers and staff in Wiltshire Police will do all that we can to stand strong with our colleagues in the Metropolitan Police Service and Security Services so that we are able to continue to protect our communities.

“This is a tragic day for the UK, and a tragic day for the police service, but we must remain resolute and not allow terrorism to prevail.”

Wiltshire Police have been displaying a number of posts on Social Media surrounding the importance of communities coming forward with information on suspicious activity which could be linked to terrorism. If you see or hear anything that could be terrorist related, act on your instincts and call the police, in confidence, on 0800 789321 or visit [www.gov.uk/ACT](http://www.gov.uk/ACT)

Thank you for your continued support to Wiltshire Police.

Please follow us on:

Twitter <https://twitter.com/wiltshirepolice>

Facebook <https://www.facebook.com/wiltshirepolice/>

Or sign up to Community Messaging <https://www.wiltsmessaging.co.uk/>

### **COMMUNITY MESSAGING**

Working with our local communities, we have been developing ways to reach out to all our communities and keep everyone up to date with the latest information that matters to you in your area.

Through feedback and working with our local communities, we have developed the use of <https://www.wiltsmessaging.co.uk/> and are now sending out daily updates around crimes that matter to you in your area. This is enabling us to reach as much of our community as possible, as quickly as possible and impart any new crime prevention advice or information about incidents that may affect you in your community that we feel you need to know about.

We have received some very positive feedback around this and encourage you to speak to all members of your community and encourage them to sign up to Wiltshire Messaging. It is free and a very good way of keeping all our communities connected.

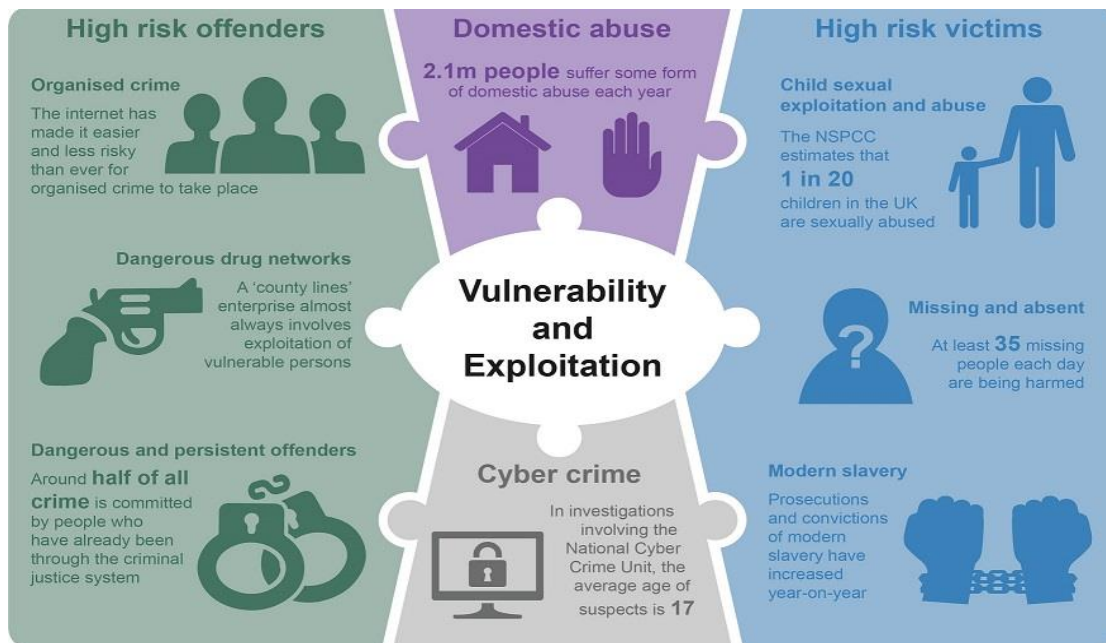
<https://www.wiltsmessaging.co.uk/>

[feedback@wiltshire.police.uk](mailto:feedback@wiltshire.police.uk)

## CONTROL STRATEGY

Below is our control strategy for your reference. This focuses on where how we conduct our operational Policing based on the Police & Crime Plan. We will continue to align our resources with the threat/harm/risks presented in line with the control strategy.

- Domestic abuse / Cyber Crime / High risk offenders / High risk victims



## CURRENT SECTOR SERIES/ Exceptions

Crime Exceptions are where the volume of crime exceeds the levels we would expect over a specified period. This is based on evaluation of data, over like to like periods historically.

### Westbury Town

I have reviewed all the data for the month of March, and the only area we have seen at a level which is higher than predicted is 'Violence Without Injury'. We were predicted to have 10 of these types of crimes reported to us, but we have seen a total of 14. This type of crime includes offences such as Harassment, Common Assault (which may or may not include a physical assault), and malicious communications. 7 of the incidents reported to us were domestic related, with 3 of them from the same residential premises.

The area where we have seen a significantly lower number of incidents reported compared to what we were predicted to receive was 'Violence With Injury'. We were predicted to have just over 9 of these types of offences, whereas we only saw 2 reported. Both of these were offences of Actual Bodily Harm, and both were during domestic incidents. The suspects for these were both interviewed, and one of them has been charged.

Overall, crime reported within the Town has been just under the figure predicted for this month. The area around Westbury Market Place has been made a priority for the Community Police Team, and this should involve increased patrols during the evenings and nights, and also during the day

throughout the school holidays. This is in a response to concerns over ASB in and around the churchyard, and also to issues associated with the night time economy (NTE) on the weekends.

### Westbury Villages

Having reviewed the data for the month of March, we are below the figures predicted for this geographical area in all crime types, and therefore also for the overall volume of crimes reported. To put this in to numbers, we have had 8 crimes reported during the month, and were predicted to have over 13.

### **OTHER INFORMATION**

EVENTS... As we start heading in to Spring and Summer, many groups and individuals start to organize various events and gatherings. A toolkit is available from Wiltshire Council which gives fantastic guidance and advice for most types of events, including topics ranging from traffic management to toilets, and gives contact details for which agencies and departments need to be contacted when applying for various licences or road closures.

It can be found at <http://www.wiltshire.gov.uk/public-events-toolkit.pdf>

In essence, all organisers must be responsible for identifying any risks and putting in measures to remove or reduce them.

SPRING IS HERE... As the warmer weather starts to appear it is tempting to throw open the windows and leave doors ajar to allow for the fresh air to flow through, BUT, this is often an open invitation to opportunistic burglars. Please do be mindful about keeping windows closed, many modern windows allow you to lock them whilst slightly ajar and I would urge you to do this if you have the capability to do so. Even if you are only in the back garden having out the washing or mowing the lawn, please ensure that your front door remains locked. Don't give these opportunists any excuse to try their luck at your property.

For a detailed breakdown of the crime in your area visit...

**<https://www.police.uk/wiltshire/>**

Community Coordinator PC 1570 Amy Hardman : [amy.hardman@wiltshire.pnn.police.uk](mailto:amy.hardman@wiltshire.pnn.police.uk)

Deputy Sector Head PS 1629 Gill Hughes : [gill.hughes@wiltshire.pnn.police.uk](mailto:gill.hughes@wiltshire.pnn.police.uk)

Sector Head Insp 2517 James Brain : [james.brain@wiltshire.pnn.police.uk](mailto:james.brain@wiltshire.pnn.police.uk)

**[feedback@wiltshire.police.uk](mailto:feedback@wiltshire.police.uk)**